

2000 U.S. Census Data - Report 3

Vicariate: Philadelphia - North Vicariate

Cluster:

Cluster 19

1. Detailed Age Breakdown for ALL People Living Within Cluster Boundaries

| Church Trends | Generational/ Age Cohorts | Birth Year | Age | Population Count | | |
|--|------------------------------|---------------|-------|------------------|---------------|---------------|
| | | | | Total | Male | Female |
| 119,958 65.0% Post-Vatican II | Millennial | 2000 | < 1 | 3,019 | 1,546 | 1,473 |
| | | 1999 | 1 | 2,942 | 1,505 | 1,437 |
| | | 1998 | 2 | 2,968 | 1,505 | 1,463 |
| | | 1997 | 3 | 2,940 | 1,490 | 1,450 |
| | | 1996 | 4 | 3,160 | 1,603 | 1,557 |
| | | 1995 | 5 | 3,329 | 1,706 | 1,623 |
| | | 1994 | 6 | 3,436 | 1,675 | 1,761 |
| | | 1993 | 7 | 3,626 | 1,852 | 1,774 |
| | | 1992 | 8 | 3,675 | 1,902 | 1,773 |
| | | 1991 | 9 | 3,810 | 1,964 | 1,846 |
| | | 1990 | 10 | 3,841 | 1,905 | 1,936 |
| | | 1989 | 11 | 3,739 | 1,881 | 1,858 |
| | | 1988 | 12 | 3,624 | 1,838 | 1,786 |
| | | 1987 | 13 | 3,373 | 1,759 | 1,614 |
| | | 1986 | 14 | 3,420 | 1,730 | 1,690 |
| | | 1985 | 15 | 3,190 | 1,571 | 1,619 |
| | | 1984 | 16 | 3,100 | 1,560 | 1,540 |
| | | 1983 | 17 | 3,284 | 1,677 | 1,607 |
| 1982 | 18 | 3,353 | 1,588 | 1,765 | | |
| 42,449 23.0% Gen. X | Gen. X | 1981 | 19 | 3,225 | 1,528 | 1,697 |
| | | 1980 | 20 | 3,301 | 1,490 | 1,811 |
| | | 1979 | 21 | 3,110 | 1,395 | 1,715 |
| | | 1976-78 | 22-24 | 7,702 | 3,551 | 4,151 |
| | | 1971-75 | 25-29 | 12,377 | 5,623 | 6,754 |
| 1966-70 | 30-34 | 12,734 | 5,771 | 6,963 | | |
| 48,846 26.5% Boomer | Boomer | 1961-65 | 35-39 | 13,680 | 6,082 | 7,598 |
| | | 1956-60 | 40-44 | 13,504 | 6,024 | 7,480 |
| | | 1951-55 | 45-49 | 12,032 | 5,369 | 6,663 |
| 1946-50 | 50-54 | 1946-50 | 50-54 | 9,630 | 4,445 | 5,185 |
| | | 1941-45 | 55-59 | 7,035 | 3,151 | 3,884 |
| 21,930 11.9% Post War | Post War | 1939-40 | 60-61 | 2,512 | 1,120 | 1,392 |
| | | 1936-38 | 62-64 | 3,329 | 1,545 | 1,784 |
| | | 1934-35 | 65-66 | 2,069 | 893 | 1,176 |
| | | 1931-33 | 67-69 | 2,855 | 1,253 | 1,602 |
| | | 1926-30 | 70-74 | 4,130 | 1,651 | 2,479 |
| 7,399 4.0% G.I. | G.I. | 1921-25 | 75-79 | 3,302 | 1,243 | 2,059 |
| | | 1916-20 | 80-84 | 2,157 | 734 | 1,423 |
| | | Bef. 1916 | 85+ | 1,940 | 518 | 1,422 |
| 184,453 100% | 184,453 100% | TOTALS | | 184,453 | 85,643 | 98,810 |

Source: U.S. Census Bureau; 2000 Census of Population and Housing, Summary File 1; (August 2001).

Notes:

- (a) Data are calculated by assigning each census block to a geography and aggregating all data for that geography.
- (b) Percentages may not total to 100% due to rounding.
- (c) Age reported as of April 1, 2000; Birth Year calculated by approximation.

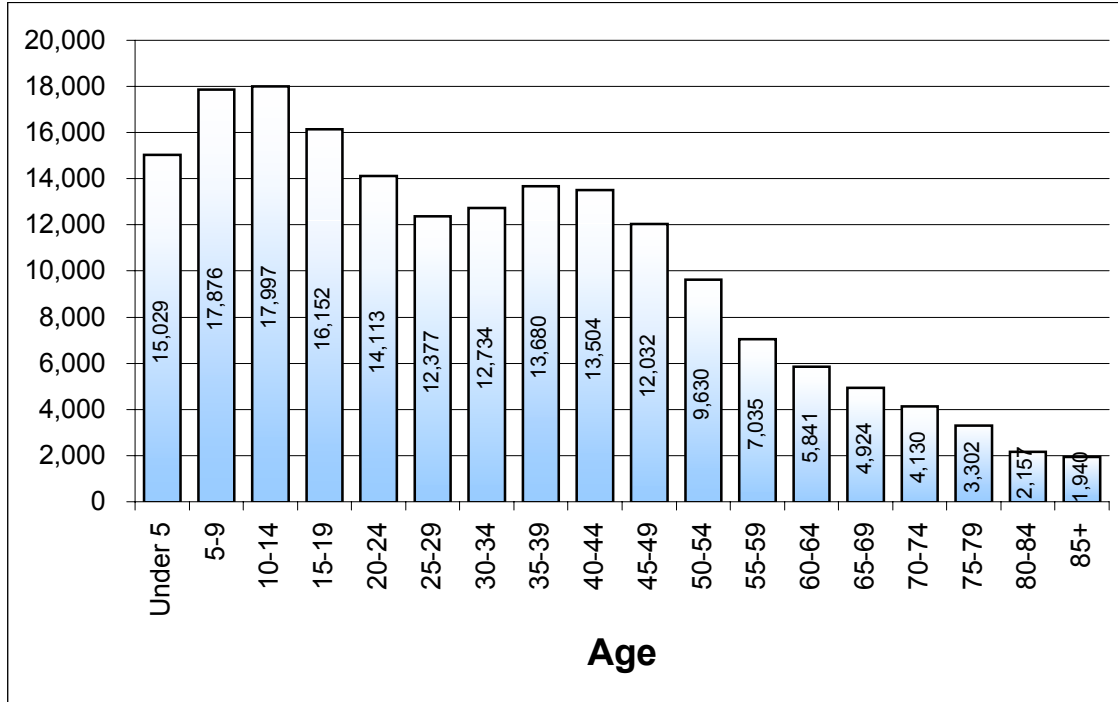
2000 U.S. Census Data - Report 3

Vicariate: Philadelphia - North Vicariate

Cluster:

Cluster 19

2. Five-Year Age Categories for ALL People Living Within Cluster Boundaries



3. Generational Cohorts (Age) for ALL People Living Within Cluster Boundaries

