

2000 U.S. Census Data - Report 3

Vicariate: Chester County Vicariate

Cluster:

Cluster 42

1. Detailed Age Breakdown for ALL People Living Within Cluster Boundaries

| Church Trends | Generational/ Age Cohorts | Birth Year | Age | Population Count | | |
|---|------------------------------|---------------|-------|------------------|---------------|---------------|
| | | | | Total | Male | Female |
| 31,447 56.9% Post-Vatican II | Millennial | 2000 | < 1 | 732 | 385 | 347 |
| | | 1999 | 1 | 847 | 460 | 387 |
| | | 1998 | 2 | 763 | 369 | 394 |
| | | 1997 | 3 | 848 | 417 | 431 |
| | | 1996 | 4 | 867 | 436 | 431 |
| | | 1995 | 5 | 872 | 446 | 426 |
| | | 1994 | 6 | 906 | 475 | 431 |
| | | 1993 | 7 | 904 | 481 | 423 |
| | | 1992 | 8 | 897 | 474 | 423 |
| | | 1991 | 9 | 962 | 502 | 460 |
| | | 1990 | 10 | 962 | 485 | 477 |
| | | 1989 | 11 | 885 | 437 | 448 |
| | | 1988 | 12 | 921 | 480 | 441 |
| | | 1987 | 13 | 854 | 451 | 403 |
| | | 1986 | 14 | 830 | 421 | 409 |
| | | 1985 | 15 | 847 | 418 | 429 |
| | | 1984 | 16 | 797 | 411 | 386 |
| | | 1983 | 17 | 853 | 439 | 414 |
| 1982 | 18 | 701 | 350 | 351 | | |
| 10,435 18.9% Gen. X | Gen. X | 1981 | 19 | 577 | 329 | 248 |
| | | 1980 | 20 | 583 | 310 | 273 |
| | | 1979 | 21 | 517 | 274 | 243 |
| | | 1976-78 | 22-24 | 1,583 | 760 | 823 |
| | | 1971-75 | 25-29 | 3,162 | 1,529 | 1,633 |
| | | 1966-70 | 30-34 | 4,013 | 1,899 | 2,114 |
| 17,291 31.3% Boomer | Boomer | 1961-65 | 35-39 | 4,764 | 2,330 | 2,434 |
| | | 1956-60 | 40-44 | 4,863 | 2,479 | 2,384 |
| | | 1951-55 | 45-49 | 4,071 | 2,034 | 2,037 |
| | | 1946-50 | 50-54 | 3,593 | 1,829 | 1,764 |
| 8,102 14.7% Post War | Post War | 1941-45 | 55-59 | 2,584 | 1,308 | 1,276 |
| | | 1939-40 | 60-61 | 880 | 471 | 409 |
| | | 1936-38 | 62-64 | 1,138 | 528 | 610 |
| | | 1934-35 | 65-66 | 754 | 360 | 394 |
| | | 1931-33 | 67-69 | 1,063 | 490 | 573 |
| | | 1926-30 | 70-74 | 1,683 | 736 | 947 |
| | | 1921-25 | 75-79 | 1,590 | 683 | 907 |
| 3,223 5.8% G.I. | G.I. | 1916-20 | 80-84 | 988 | 417 | 571 |
| | | Bef. 1916 | 85+ | 645 | 207 | 438 |
| | | | | | | |
| 55,299 100% | 55,299 100% | TOTALS | | 55,299 | 27,310 | 27,989 |

Source: U.S. Census Bureau; 2000 Census of Population and Housing, Summary File 1; (August 2001).

Notes:

- (a) Data are calculated by assigning each census block to a geography and aggregating all data for that geography.
- (b) Percentages may not total to 100% due to rounding.
- (c) Age reported as of April 1, 2000; Birth Year calculated by approximation.

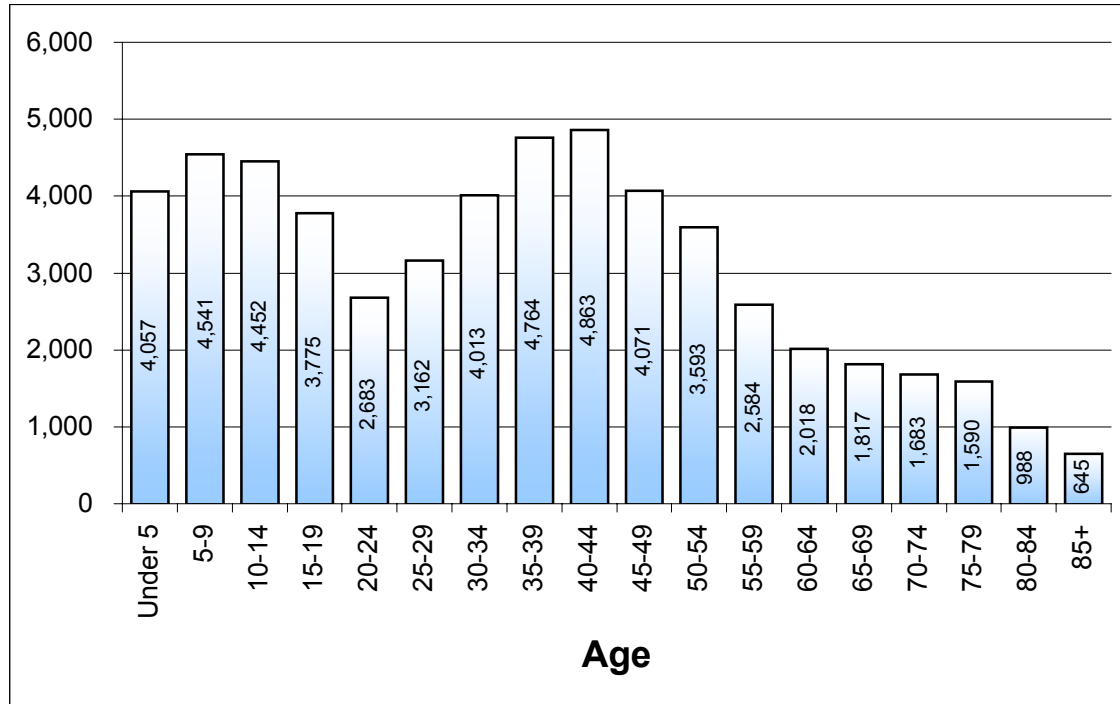
2000 U.S. Census Data - Report 3

Vicariate: Chester County Vicariate

Cluster:

Cluster 42

2. Five-Year Age Categories for ALL People Living Within Cluster Boundaries



3. Generational Cohorts (Age) for ALL People Living Within Cluster Boundaries

